

Model WMC Miniature Sealed Stainless Steel Load Cell

Capacities 5-500 lbf

Why the Interface model WMC Miniature Sealed Stainless Steel Load Cell is the best in class:

- Proprietary Interface temperature compensated strain gages
- Tension and compression
- Small size
- Environmentally sealed

STANDARD CONFIGURATION

- 5 ft Integral Cable

OPTIONS*

Extra Cable Length

ACCESSORIES*

Instrumentation

*See appendix for more technical information



SPECIFICATIONS

ACCURACY - (MAX ERROR)

Nonlinearity-% FS± 0.15
 Hysteresis-% FS± 0.15
 Nonrepeatability-% RO± 0.05
 Creep, in 20 min-%± 0.05

TEMPERATURE

Compensated Range-°F15 to 115
 Compensated Range-°C-10 to 45
 Operating Range-°F-65 to 250
 Operating Range-°C-54 to 121
 Effect on Output-%/°F - MAX± 0.002
 Effect on Zero-% RO/°F - MAX± 0.005

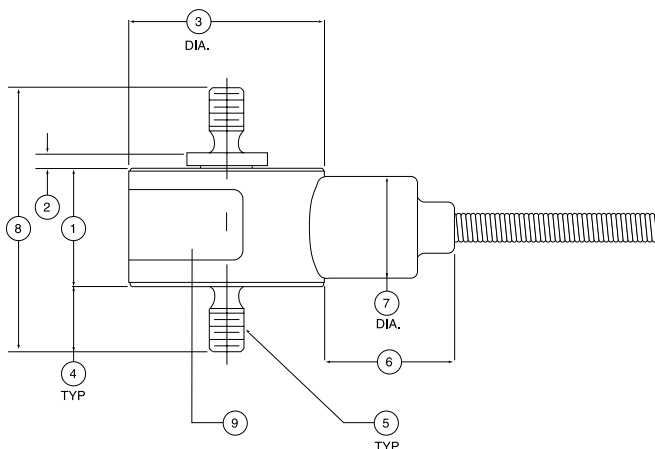
ELECTRICAL

Rated Output-mV/V (Nominal)2.0
 Zero Balance-% RO± 2.0
 Bridge Resistance-Ohm (Nominal)350
 Excitation Voltage - MAX12.0 VDC
 Insulation Resistance - Megohm> 5000

MECHANICAL

CalibrationTension
 Safe Overload-% CAP:
 5, 10 lbf150
 25-500 lbf150
 Cable length-ft5

DIMENSIONS



See Drawing	CAPACITY (lbf)					
	5, 10		25, 50, 100		250, 500	
	inch	mm	inch	mm	inch	mm
①	0.45	11.4	0.52	13.21	0.52	13.21
②	0.06	1.5	0.12	3.05	0.03	0.76
③	0.75	19.1	1.00	25.4	1.00	25.4
④	0.25	6.4	0.25	6.4	0.38	9.7
⑤	6-32 UNF		10-32 UNF		1/4-28 UNF	
⑥	0.50	12.7	0.50	12.7	0.50	12.7
⑦	0.39	9.9	0.39	6.4	0.39	6.4
⑧	1.01	25.6	1.14	29.0	1.31	33.3
⑨	label		label		label	

Model WMC Miniature Sealed Stainless Steel Load Cell

Capacities 1-10Klbf

Why the Interface model WMC Miniature Sealed Stainless Steel Load Cell is the best in class:

- Proprietary Interface temperature compensated strain gages
- Tension and compression
- Small size
- Environmentally sealed

STANDARD CONFIGURATION

- 5 ft Integral Cable

OPTIONS*

Extra Cable Length

ACCESSORIES*

Instrumentation

*See appendix for more technical information



SPECIFICATIONS

ACCURACY - (MAX ERROR)

Nonlinearity-% FS± 0.20
 Hysteresis-% FS± 0.20
 Nonrepeatability-% RO± 0.05
 Creep, in 20 min-%± 0.05

TEMPERATURE

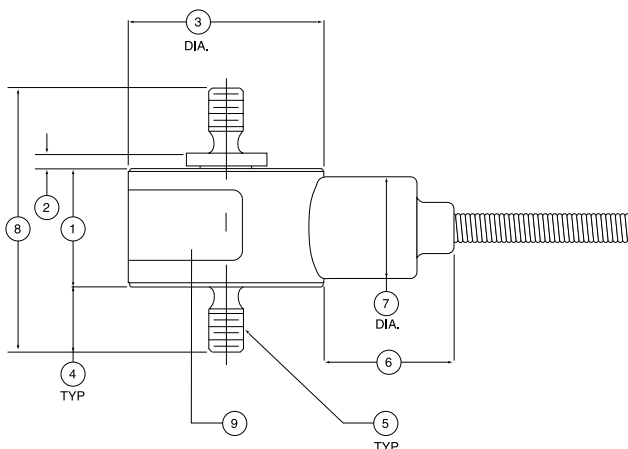
Compensated Range-°F15 to 115
 Compensated Range-°C-10 to 45
 Operating Range-°F-65 to 250
 Operating Range-°C-54 to 121
 Effect on Output-%/F - MAX± 0.002
 Effect on Zero-% RO/F - MAX± 0.005

ELECTRICAL

Rated Output-mV/V (Nominal)2.0
 Zero Balance-% RO± 2.0
 Bridge Resistance-Ohm (Nominal)350
 Excitation Voltage - MAX.....15 VDC
 Insulation Resistance - Megohm.....> 5000

MECHANICAL

CalibrationTension
 Safe Overload-% CAP.....150
 Cable length-ft.....5



DIMENSIONS

See Drawing	CAPACITY (lbf)							
	1K		2K, 3K		5K		7.5K, 10K	
	inch	mm	inch	mm	inch	mm	inch	mm
①	0.53	13.4	0.72	18.3	0.94	23.9	1.09	27.7
②	0.03	0.8	0.03	0.08	0.03	0.08	0.03	0.08
③	1.00	25.4	1.00	25.4	1.25	31.8	1.38	34.9
④	0.38	9.7	0.50	12.7	0.63	16.0	0.88	22.4
⑤	0.250-28 UNF		0.375-24 UNF		0.500-20 UNF		0.750-16 UNF	
⑥	0.50	12.7	0.50	12.7	0.50	12.7	0.50	12.7
⑦	0.44	11.2	0.39	9.9	0.39	9.9	0.39	9.9
⑧	1.32	33.5	1.75	44.5	2.23	56.6	2.88	73.2
⑨	label		label		label		label	